



36' CLEAR HEIGHT

281 ACRE MASTERPLANNED CENTER

Building 6 | 2400 Liberty Drive | Northampton, PA 18067

HIGHLIGHTS

Architectural two-story glass entry with abundant clerestory glass

Proximity to large metro cities: New York, Philadelphia, Washington D.C. and Baltimore

Port of New York and New Jersey within 85 miles

Easy access to Interstate Highways

Convenient to Lehigh Valley International Airport in Allentown, Pennsylvania

Within 3 miles of new FedEx Ground distribution hub

Two Class I railroads (Norfolk Southern and Canadian Pacific) interchange at Bethlehem Intermodal Terminal nearby

SPECIFICATIONS

OFFICE SIZE: ±5,400 SF ground floor office, ±2,200 SF mezzanine
(mezzanine not included in building SF)

LAND SIZE: 19.7 acres

TRUCK POSITIONS: dock high: 46 (9' x 10') drive-in doors with ramp: 2 (12' x 16')

BAY SPACING: 49' x 56' (typical) with 60' speed bay

TRAILER STORAGE: 72 spaces (10' wide continuous concrete dolly pad)

TRUCK COURT DEPTH: up to 240' with 60' concrete truck apron

MINIMUM CLEARANCE: 36' (at first bay)

FLOOR SLABS: 7" thick, 4,000 psi synthetic reinforced concrete

SPRINKLER SYSTEM: ESFR (K-25.2 heads)

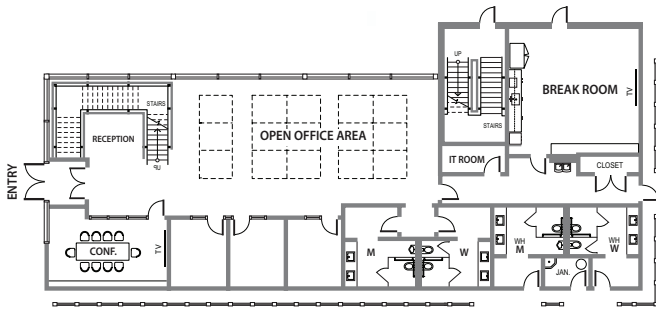
POTENTIAL POWER CAPACITY: 3,000 amps, 277/480 volts, 3 phase, 4 wire

WAREHOUSE LIGHTING: LED with motion sensors

PARKING SPACES: 129



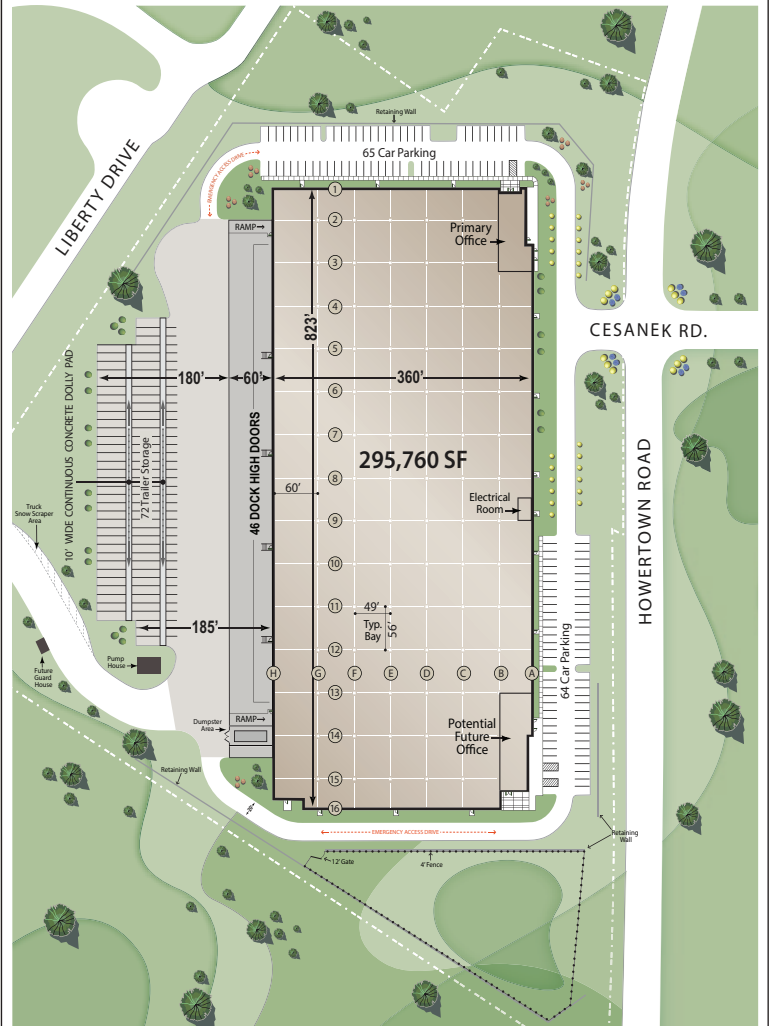
GROUND FLOOR OFFICE ±5,400 SF



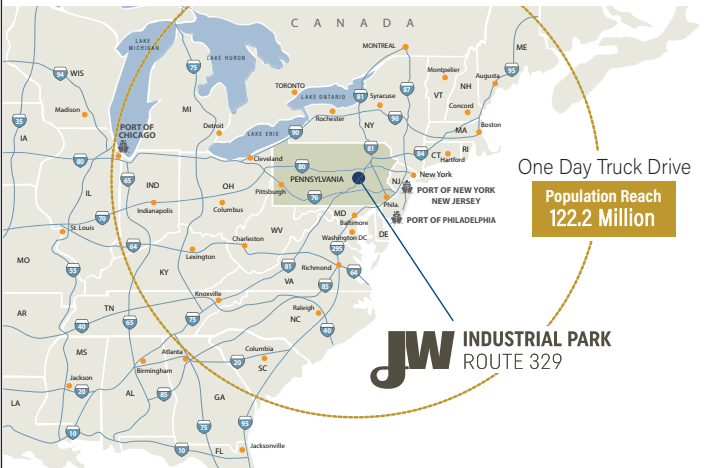
JW INDUSTRIAL PARK 329 SITE MAP



BUILDING 6 SITE PLAN 2400 Liberty Drive | Northampton, PA



ONE DAY TRUCK DRIVE



The information on this brochure has been compiled for the internal administrative convenience of Watson Land Company. Watson Land Company makes no representation or warranty, express or implied, as to the accuracy of this brochure. This brochure may not reflect all building improvements or as-built conditions. The information contained herein and on any other materials with which it is presented is not an offer and is subject to change without notice. Tenants should make their own independent investigations of all facts and assumptions on which they might rely in making a decision to lease property from Watson Land Company.



www.cbre.com/philadelphiasub

Vincent Ranalli
Executive Vice President
610.251.5194
Vincent.Ranalli@cbre.com

Ryan Barros
Senior Vice President
610.251.5131
Ryan.Barros@cbre.com

Tom Monahan
Vice Chairman
201.712.5610
Thomas.Monahan@cbre.com

Tony Gruenling
Senior Vice President
610.251.5108
Tony.Gruenling@cbre.com