



3965 Easton-Nazareth Highway | Lower Nazareth, PA 18064

HIGHLIGHTS

Proximity to large metro cities:
New York, Philadelphia, Boston,
Washington D.C. and Baltimore

Port of New York and New Jersey
within 75 miles

Easy access to Interstate Highways

Convenient to Lehigh Valley
International Airport in Allentown,
Pennsylvania

Within 13 miles of the new
FedEx Ground distribution hub

Two Class I railroads (Norfolk
Southern and Canadian Pacific)
interchange at Bethlehem
Intermodal Terminal nearby

SPECIFICATIONS

OFFICE SIZE: ± 5,076 SF ground floor office
± 3,000 SF mezzanine
(unimproved mezzanine not included in building SF)

TRUCK POSITIONS: Dock high: 71 (9' x 10')
Drive-in doors with ramp: 2 (12' x 16')

BAY SPACING: 55' x 56' (typical) with
60' speed bay

TRAILER STORAGE: 93 spaces
(10' wide continuous concrete dolly pad)

TRUCK COURT DEPTH: 185'

MINIMUM CLEARANCE: 40' (at first bay)

SPRINKLER SYSTEM: ESFR (K-25.2 heads)

POWER: 3,000 amps, 277/480 volts,
3 phase, 4 wire

WAREHOUSE LIGHTING: LED with motion
sensors

PARKING SPACES: 152

FEATURES

Within a master planned center

Architectural two-story glass entry

Abundant clerestory glass

Floor slabs 7" thick, 4,000 psi synthetic
fiber reinforced concrete

60' speed bay

60' concrete truck apron



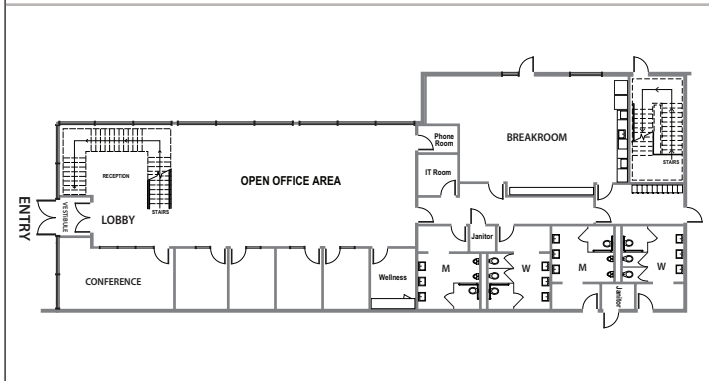
JW INDUSTRIAL PARK

ROUTE 33

469,259 SF

AVAILABLE FOR LEASE

GROUND FLOOR OFFICE



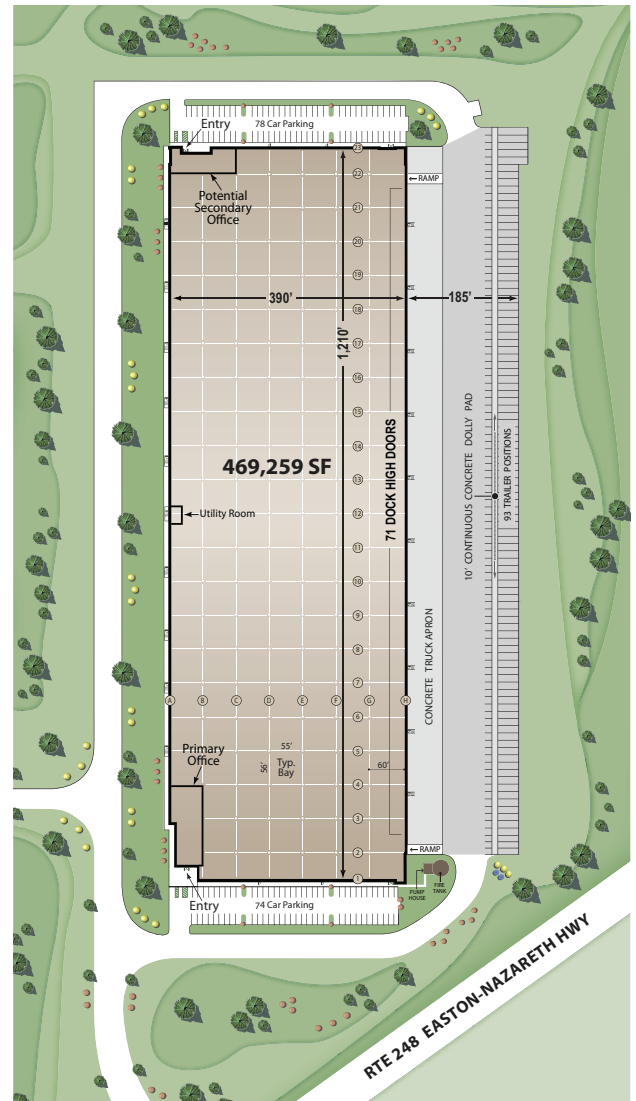
JW INDUSTRIAL PARK ROUTE 33 SITE MAP



ONE DAY TRUCK DRIVE



SITE PLAN 3965 Easton-Nazareth Hwy, Lower Nazareth, PA



The information on this brochure has been compiled for the internal administrative convenience of Watson Land Company. Watson Land Company makes no representation or warranty, express or implied, as to the accuracy of this brochure. This brochure may not reflect all building improvements or as-built conditions. The information contained herein and on any other materials with which it is presented is not an offer and is subject to change without notice. Tenants should make their own independent investigations of all facts and assumptions on which they might rely in making a decision to lease property from Watson Land Company.



Jones Lang Lasalle
550 E. Swedesford Rd.
Suite 260
Wayne, PA 19087

Jeff Lockard
Executive Managing Director
215.990.1889
jeff.lockard@jll.com

Maria Ratzlaff
Executive Vice President
717.791.2210
maria.ratzlaff@jll.com

Ryan Barros
Senior Vice President
610.249.2264
ryan.barros@jll.com

Kevin Lammers
Associate Vice President
610.249.2255
kevin.lammers@jll.com