

WATSON

INDUSTRIAL CENTER

21,663 SF

Available For Lease



Watson Building 193.1

860 E. 238th Street, Carson, CA 90745

VALUE ADVANTAGE

Potential merchandise processing fee savings with Foreign Trade Zone 202 activation

Master Planned Center

Close to Ports of Los Angeles, Long Beach and Los Angeles International Airport

Convenient access to the San Diego (405), Harbor (110), Long Beach (710), Artesia (91) and Terminal Island (103) Freeways.

Near Intermodal Container Transfer Facility

SPECIFICATIONS

BUILDING SIZE: 21,663 SF

OFFICE SIZE: 2,800 SF

LAND SIZE: Part of Larger

POWER: 400 amps, 277/480 volts, 3 phase, 4 wire

WAREHOUSE LIGHTING: T5

SPRINKLER SYSTEM: .30 GPM/3,000 SF

MINIMUM CLEARANCE: 21'

TURNING RADIUS: 121' shared

TRUCK POSITIONS: 2 12' x 10'

GROUND LEVEL RAMP: 1 - 14' X 14'

BAY SPACING: 24' x 54' (Typical)



WATSON

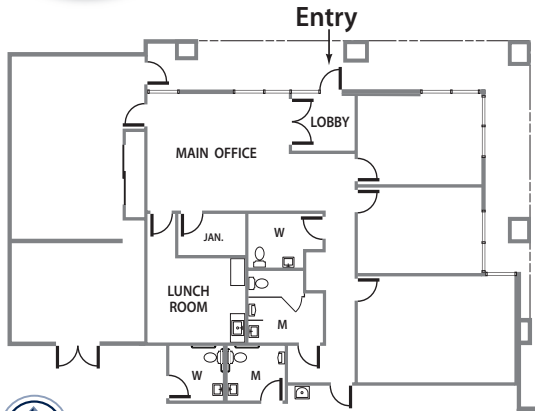
INDUSTRIAL CENTER

21,663 SF

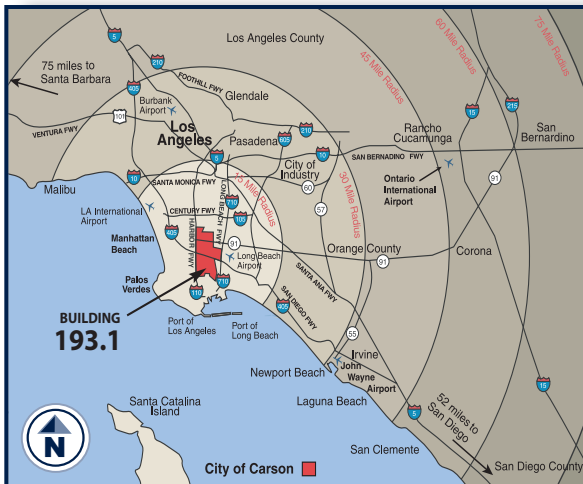
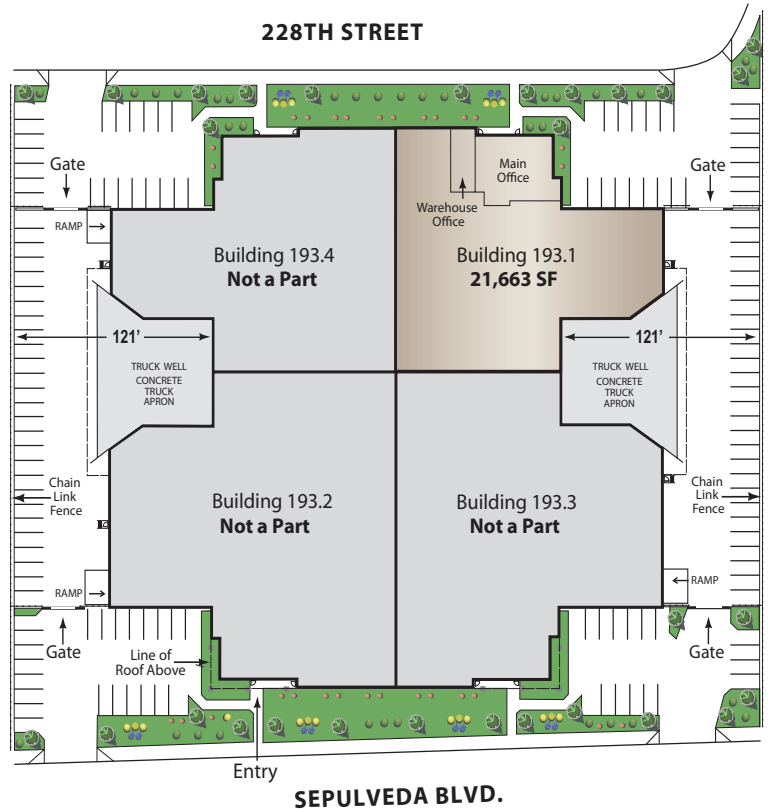
Available For Lease



OFFICE PLAN



WATSON BUILDING 193.1 SITE PLAN



The information on this brochure has been compiled for the internal administrative convenience of Watson Land Company. Watson Land Company makes no representation or warranty, express or implied, as to the accuracy of this brochure. This brochure may not reflect all building improvements or as-built conditions. The information contained herein and on any other materials with which it is presented is not an offer and is subject to change without notice. Tenants should make their own independent investigations of all facts and assumptions on which they might rely in making a decision to lease property from Watson Land Company.



Contact: **Lance Ryan** lryan@watsonlandcompany.com **Mike Bodlovich** mbodlovich@watsonlandcompany.com

Bridgette Sanossian bsanossian@watsonlandcompany.com

Phone 310.952.6401 Fax 310.522.8788

22010 Wilmington Avenue, Carson, California 90745