

# WATSON

INDUSTRIAL PARK CHINO

## 323,030 SF

Available For Lease



**36' Clear Height** for up to 25% more storage space



Build Green. Everyone Profits.

### LEED- Leadership in Energy & Environmental Design

Legacy Building<sup>SM</sup> 831 has been constructed as a LEED<sup>®</sup> certified building. LEED<sup>®</sup> developments are voluntary and are designed to be environmentally responsible, high performing, sustainable and healthy places to work.

\*LEED is a registered trademark of the U.S. Green Building Council.

## Legacy Building<sup>SM</sup> 831

8601 Merrill Avenue, Chino, CA

### SPECIFICATIONS

**BUILDING SIZE:** 323,030 SF

**OFFICE SIZE:** 5,225 SF (5,050 SF unimproved mezzanine, not included in square footage)

**LAND SIZE:** 738,522 SF

**TRUCK POSITIONS:** Dock High: 61 (9'x 10')  
Ground Level Ramp: 1 (12'x 14')

**TRUCK TURNING RADIUS:** 185'

**MINIMUM CLEARANCE:** 36'

**SPRINKLER SYSTEM:** ESFR (K 25.2 heads)

**TRAILER STORAGE SPACES:** 81

**POWER:** 2,000 amps, 277/480 volts,  
3 phase, 4 wire (Expandable)

**PARKING SPACES:** 302

### LEGACY FEATURES

LED warehouse lights with motion sensors

100% concrete truck courts

3% skylights

Architectural two-story glass entries

8" thick reinforced, 4,000 psi  
concrete floor slabs

Abundant clerestory glass

Motorized gate entry (Flight Ave.)

Guard shack (Flight Ave.)

Forty (40) 35,000 LB. EOD load levelers



# WATSON

INDUSTRIAL PARK CHINO

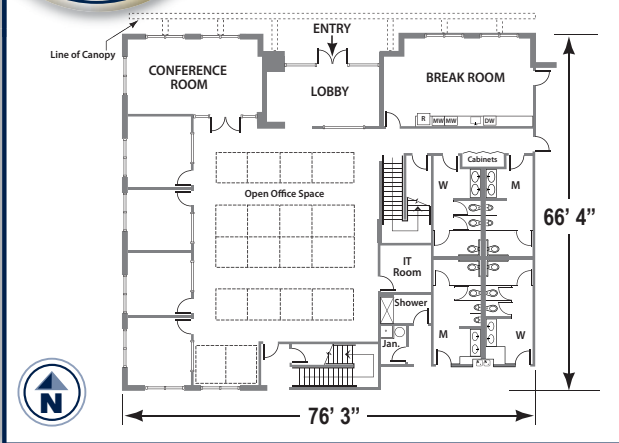
## 323,030 SF

Available For Lease



### OFFICE PLAN 5,225 SF

(with 5,050 SF unimproved mezzanine)

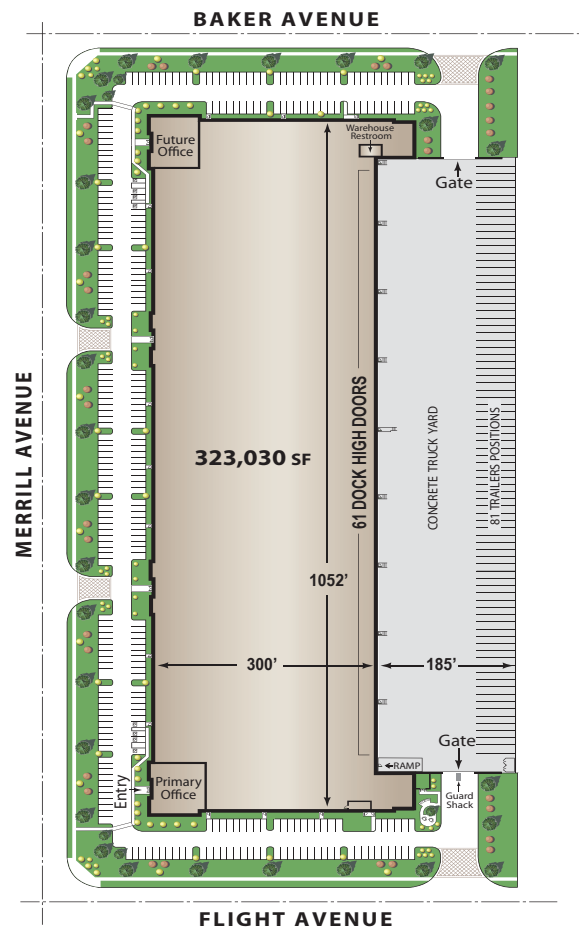


### WATSON INDUSTRIAL PARK CHINO



### LEGACY BUILDING<sup>SM</sup> 831 SITE PLAN

LEED<sup>®</sup> Certified



The information on this brochure has been compiled for the internal administrative convenience of Watson Land Company. Watson Land Company makes no representation or warranty, express or implied, as to the accuracy of this brochure. This brochure may not reflect all building improvements or as-built conditions. The information contained herein and on any other materials with which it is presented is not an offer and is subject to change without notice. Tenants should make their own independent investigations of all facts and assumptions on which they might rely in making a decision to lease property from Watson Land Company.

For Further Information Please Contact:

**Thomas E. Taylor**  
thomas.taylor@colliers.com  
License # 00598896

**Steven J. Bellitti**  
steve.bellitti@colliers.com  
License # 01048797

**Joey Jones**  
joey.jones@colliers.com  
License # 01952925

Ph 909.605.9400



Our Knowledge is your Property

**COLLIERS International**  
2855 E. Guasti Road  
Suite 401  
Ontario, CA 91761  
[colliers.com](http://colliers.com)

