

WATSON

COMMERCE CENTER

553,963 SF

Available For Lease

For more information go to www.watsonredlands.com



Build Green. Everyone Profits.

LEED- Leadership in Energy & Environmental Design

Legacy BuildingSM 860 is being constructed as an LEED[®] certified building. LEED[®] developments are voluntary and are designed to be environmentally responsible, high performing, sustainable and healthy places to work.

Legacy BuildingSM 860

26597 San Bernardino Ave., Redlands, CA 92374

SPECIFICATIONS

BUILDING SIZE: 553,963 sq. ft.

OFFICE SIZE: 5,340 SF

LAND SIZE: 1,135,498 sq. ft.

DOCK HIGH TRUCK POSITIONS: 108 (9' x 10')
Ground Level Ramp: 2 (12' x 14')

TRUCK TURNING RADIUS: 185'

MINIMUM CLEARANCE: 32'

SPRINKLER SYSTEM: ESFR

YEAR OF CONSTRUCTION: 2012

POWER: 2,000 amps, 480/277 volts,
3 phase, 4 wire

PARKING SPACES: 228 (Expandable)

LEGACY FEATURES

100% concrete truck courts

135 Trailer Storage Positions

3% skylights

Architectural two-story glass entries

7" thick reinforced, 4,000 psi
concrete floor slabs

Abundant clerestory glass



*LEED is a registered trademark of the U.S. Green Building Council.

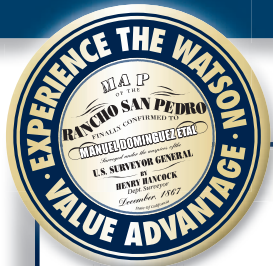
watsonlandcompany.com

WATSON

COMMERCE CENTER

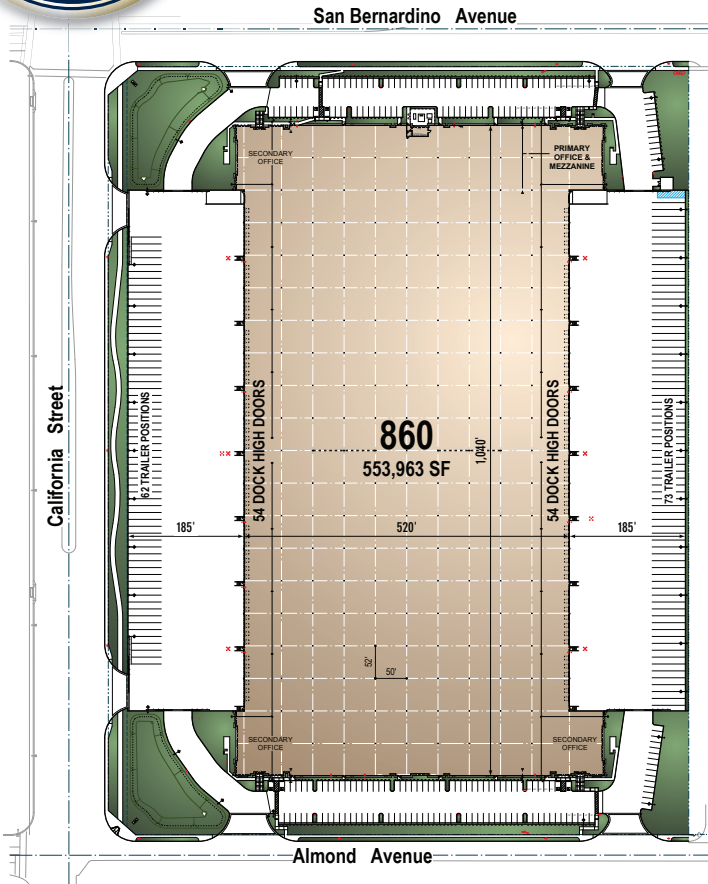
553,963 SF

Available For Lease



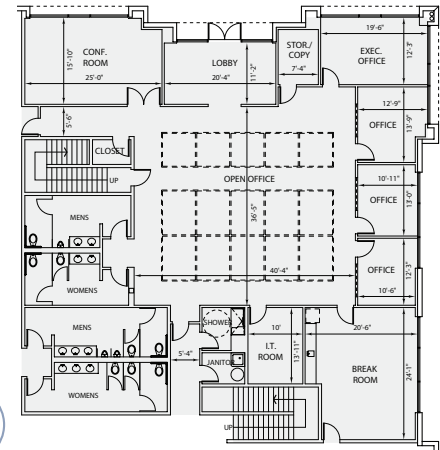
LEGACY BUILDINGSM 860 SITE PLAN

LEED[®] Certified



The information on this brochure has been compiled for the internal administrative convenience of Watson Land Company. Watson Land Company makes no representation or warranty, express or implied, as to the accuracy of this brochure. This brochure may not reflect all building improvements or as-built conditions. The information contained herein and on any other materials with which it is presented is not an offer and is subject to change without notice. Tenants should make their own independent investigations of all facts and assumptions on which they might rely in making a decision to lease property from Watson Land Company.

PRIMARY OFFICE PLAN 5,340 SF



For Further Information Please Contact:



Our Knowledge is your Property

COLLIERS International: 2855 E. Guasti Road, Suite 401, Ontario, California 91761

Thomas E. Taylor
thomas.taylor@colliers.com
License # 00598896

Steven J. Bellitti
steve.bellitti@colliers.com
License # 01048797

Summer Coulter
summer.coulter@colliers.com
License # 01811350

Phone 909.605.9400 www.colliers.com Fax 909.396.4300

Developed Owned And Managed By WATSON LAND COMPANY watsonlandcompany.com