

# WATSON COMMERCE CENTER CHINO

**60 Acre Master Planned Project with LEED® Certification**

**297,107 SQUARE FEET - FOR LEASE**



## LEGACY BUILDING<sup>SM</sup> 816

6810 BICKMORE AVENUE, CHINO, CALIFORNIA 91710



### Build Green. Everyone Profits.

#### LEED- Leadership in Energy & Environmental Design

Legacy Building<sup>SM</sup> 816 is being constructed as a LEED® certified building. LEED® developments are voluntary and are designed to be environmentally responsible, high performing, sustainable and healthy places to work.

### SPECIFICATIONS

BUILDING SIZE:  
297,107 sq. ft.

MINIMUM CLEARANCE:  
32' at first column

OFFICE SIZE:  
4,344 sq. ft.

SPRINKLER SYSTEM:  
ESFR sprinkler system

LAND SIZE:  
599,821 sq. ft.

YEAR OF CONSTRUCTION:  
2007

TRUCK POSITIONS:  
Dock High: 47- 9' x 10' doors  
Ground Level Ramp: 1-12' x 14' door

POWER:  
1,200 amps, 480/277 volts,  
3 phase 4 wire

TRUCK TURNING RADIUS:  
184'

PARKING SPACES:  
137 (Expandable)

### LEGACY BUILDING<sup>SM</sup> FEATURES

- 65 trailer storage spaces
- 100% concrete truck courts
- 3% skylights
- Architectural two-story glass entries
- 7" thick reinforced, 4,000 psi concrete floor slabs
- Abundant clerestory glass

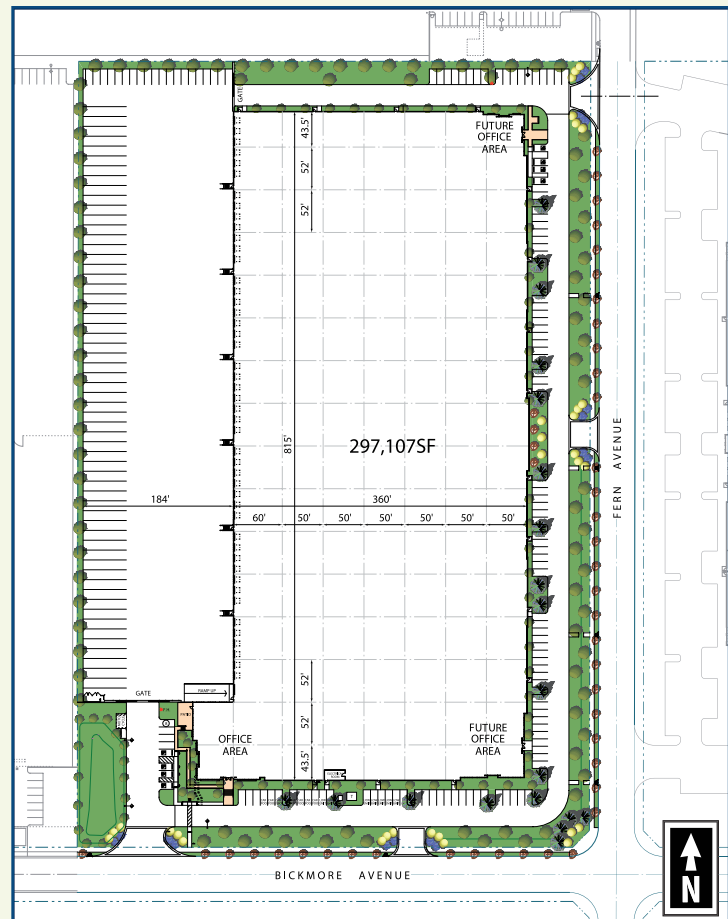
## 60 Acre Master Planned Project with LEED® Certification



## 297,107 SQUARE FEET - FOR LEASE

LEGACY BUILDING<sup>SM</sup> 816

NWC EUCLID &amp; BICKMORE AVENUES, CHINO, CA 91710



The information on this brochure has been compiled for the internal administrative convenience of Watson Land Company. Watson Land Company makes no representation or warranty, express or implied, as to the accuracy of this brochure. This brochure may not reflect all building improvements or as-built conditions. The information contained herein and on any other materials with which it is presented is not an offer and is subject to change without notice. Tenants should make their own independent investigations of all facts and assumptions on which they might rely in making a decision to lease property from Watson Land Company.

For further information please contact:



Our *Knowledge* is your Property

**COLLIERS International:** 21700 East Copley Drive, Suite 100, Diamond Bar, California 91765

**Thomas E. Taylor** thomas.taylor@colliers.com      **Steven J. Bellitti** steve.bellitti@colliers.com      **Josh Hayes** josh.hayes@colliers.com

**PH (909) 860.3180    [www.colliers.com](http://www.colliers.com)    Fax (909) 396.4300**

Developed Owned And Managed By



**WATSON LAND COMPANY**

**www.watsonlandcompany.com**