

WATSON

COMMERCE CENTER

117,052 SF

Available For Lease



Legacy BuildingSM 821

15702 Cypress Avenue, Chino, CA



Build Green. Everyone Profits.

LEED- Leadership in Energy & Environmental Design

Legacy BuildingSM 821 has been constructed as a LEED[®] certified building. LEED[®] developments are voluntary and are designed to be environmentally responsible, high performing, sustainable and healthy places to work.

*LEED is a registered trademark of the U.S. Green Building Council.

SPECIFICATIONS

BUILDING SIZE: 117,052 SF

OFFICE SIZE: 5,135 SF

LAND SIZE: 265,817 SF

TRUCK POSITIONS: Dock High: 25 (9' x 10')
Ground Level Ramp: 1 (12' x 14')

TRUCK TURNING RADIUS: 135'

MINIMUM CLEARANCE: 32'

SPRINKLER SYSTEM: ESFR

POWER: 1,200 amps, 277/480 volts,
3 phase, 4 wire (Expandable)

VEHICLE PARKING SPACES: 78

LEGACY FEATURES

100% concrete truck courts

3% skylights

Architectural two-story glass entries

7" thick reinforced, 4,000 psi
concrete floor slabs

Abundant clerestory glass



WATSON

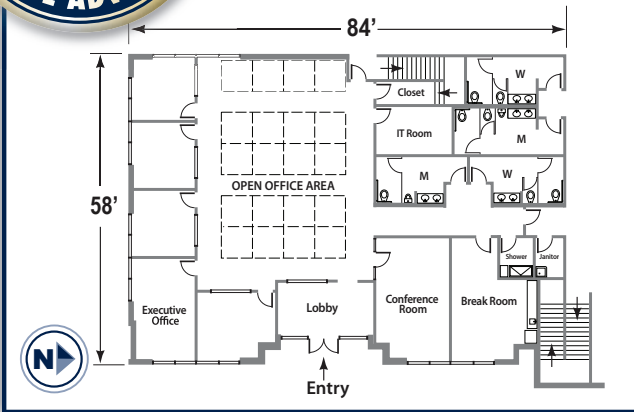
COMMERCE CENTER

117,052 SF

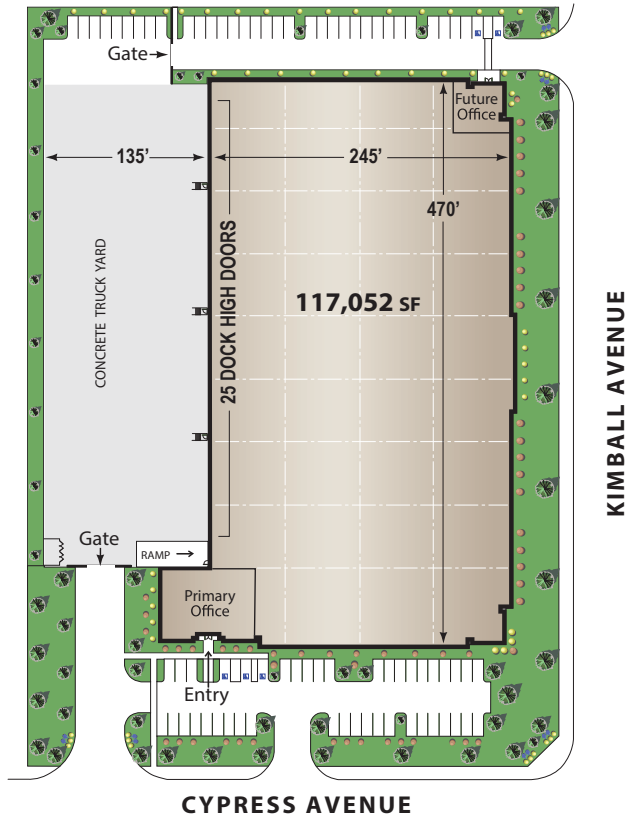
Available For Lease



OFFICE PLAN 5,135 SF



LEGACY BUILDINGSM 821 SITE PLAN LEED[®] Certified



The information on this brochure has been compiled for the internal administrative convenience of Watson Land Company. Watson Land Company makes no representation or warranty, express or implied, as to the accuracy of this brochure. This brochure may not reflect all building improvements or as-built conditions. The information contained herein and on any other materials with which it is presented is not an offer and is subject to change without notice. Tenants should make their own independent investigations of all facts and assumptions on which they might rely in making a decision to lease property from Watson Land Company.

WATSON COMMERCE CENTER CHINO



For Further Information Please Contact:



Steve Haston
shaston@lee-assoc.com
3535 Inland Empire Blvd.
Ontario 91764
909-989-7771 ext 133

Paul Earnhart
pearnhart@lee-assoc.com
3535 Inland Empire Blvd.
Ontario 91764
909-989-7771 ext 140

LEE & Associates: lee-associates.com

View more information online at: watsonchino.com

